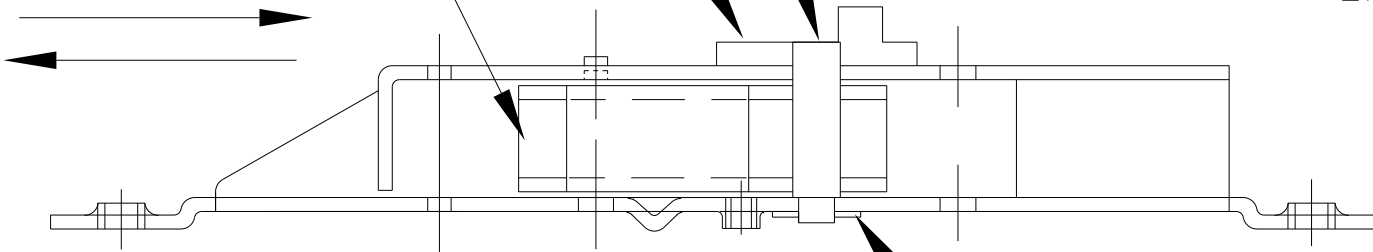


ACTUATING CAM
30-466

CONNECTING LINK
30-917

SQUARE PIN
30-805



WASHER
30-805

ASSEMBLY NOTES:

1. SQUARE PIN ONCE ASSEMBLED INTO ACTUATING CAM, SHOULD BE FLUSH WITH SURFACE OF CAM (30-466)
2. AFTER ATTACHMENT OF WASHER 30-805 ONTO SQ. PIN, CONNECTING LINK 30-917 AND CAM SHOULD HAVE FREE SLIDING AND ROTATION MOVEMENT.

DIMENSIONAL TOLERANCES UNLESS OTHERWISE SPECIFIED		APPROVALS	DATE
DECIMAL DIMENSIONS .XX ± .010		APPROVED	
DECIMAL DIMENSIONS .XXX ± .005		CHECKED	
ANGULAR ± 1 °	FRACTIONAL ± 1/64	DRAWN	R.M. 06/07/00

FILE NO.	MATERIAL .074 C.R.S.
NEXT ASSY. 30-882	FINISH
QTY. USED 1	HEAT TREAT

SCALE NONE

CASE ASSEMBLE INSTRUCTIONS
1085,1285,2085
CVR DEVICES



3447 UNION PACIFIC AVE.
LOS ANGELES, CALIF. 90023

SHEET 1 OF 1 SHEETS	
DWG. NO. 10-998	REV. A