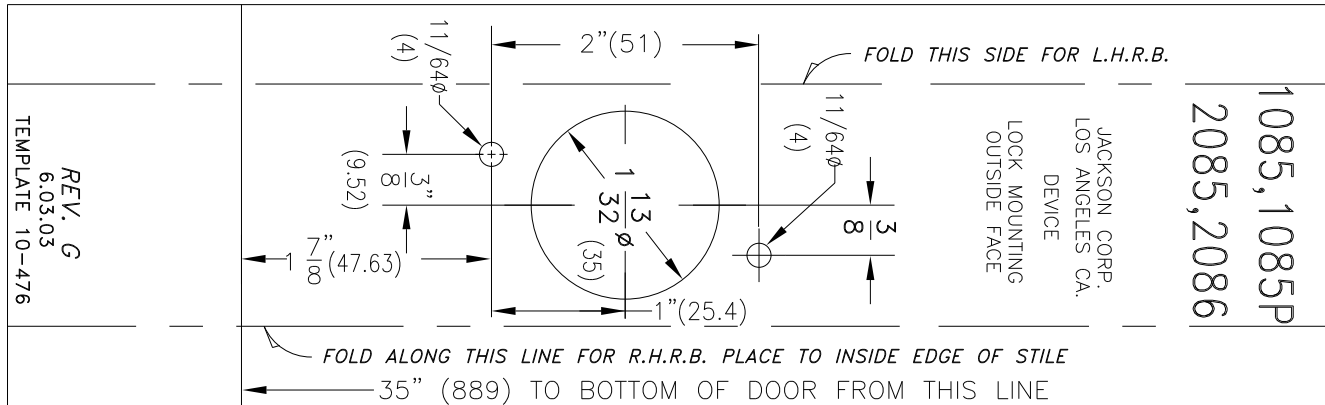


NOTES:

1. CUT TEMPLATE TO SIZE (10x3").
2. TEMPLATE TO BE REPRODUCED TO EXACT FULL SIZE.



G	6.10.03	REVISED TO MTG. FOR 1085,2085,2086	ECN1674	RM
F	12.16.02	INCORPORATE 11/32 $\phi$ HOLE	ECN1644	RM
E	12/04/01	1-13/32 $\phi$ WAS 1-11/32 $\phi$	ECN1534	RM
D	11/07/01	REVISE CALLOUT FOR LOCK PREP, ELIMINATE TOP&BTM C'SINK'S	ECN1495	RM
C	3/2/98	ADD DUAL CLL-OUT	ECN1143	RM
B	9/4/90	ADD DIM. TO TEMPLATE ADD NOTE 2	ECN254	
A	9/28/87	ADD NOTES AND NEW TITLE BLOCK ADD REV A		

DIMENSIONAL TOLERANCES UNLESS OTHERWISE SPECIFIED		APPROVALS	DATE
DECIMAL DIMENSIONS .XX	$\pm$ .010	APPROVED	
DECIMAL DIMENSIONS .XXX	$\pm$ .005	CHECKED	
ANGULAR $\pm$ $\circ$	FRACTIONAL $\pm$ 1/64	DRAWN	R.M. 4/29/97
MATERIAL		SCALE	FULL



FILE NO.	MATERIAL	TEMPLATE 1085,1085P,2085,2086	SHEET 1 OF 1 SHEETS
NEXT ASSY.	FINISH		DWG. NO.
QTY. USED	HEAT TREAT		REV.
	1		10-476 G