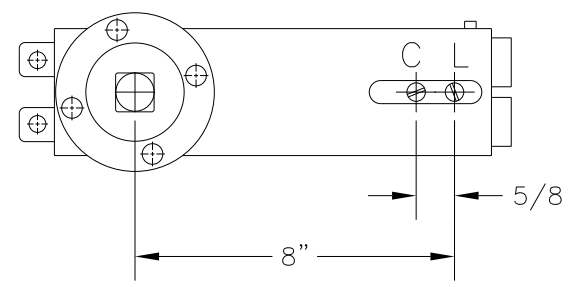
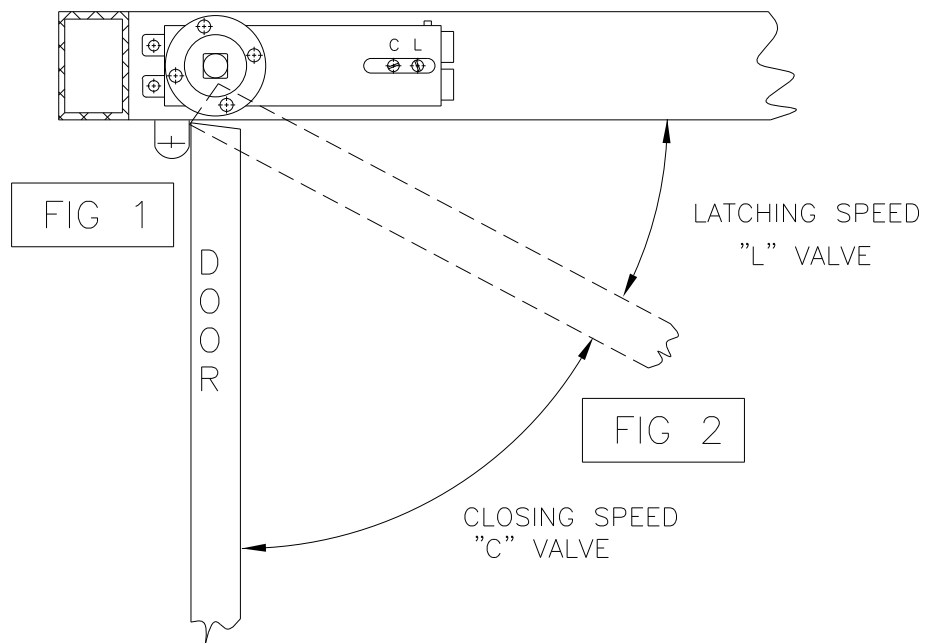



JACKSON ANSI-GRADE 1 TWO VALVE CLOSER INSTRUCTIONS AND ADJUSTMENT.

- A. THIS CLOSER HAS BEEN FULLY TESTED AND ADJUSTED AT THE FACTORY. THE CLOSING AND LATCHING SPEEDS HAVE BEEN PRE-SET TO ACHIEVE A 6-8 SECOND CLOSING CYCLE, UNDER NORMAL CONDITIONS. SEE FIG 2.
- B. TO INCREASE EITHER SPEED, TURN THE APPROPRIATE VALVE COUNTERCLOCKWISE. TO DECREASE EITHER SPEED, TURN THE APPROPRIATE VALVE CLOCKWISE.



VALVE IDENTIFICATION

"C"=CLOSING SPEED
"L"=LATCHING SPEED.

DIMENSIONAL TOLERANCES UNLESS OTHERWISE SPECIFIED		APPROVALS	DATE	 <small>3447 UNION PACIFIC AVE. LOS ANGELES, CALIF. 90023</small>
DECIMAL DIMENSIONS .XX ± .010		APPROVED		
DECIMAL DIMENSIONS .XXX ± .005		CHECKED		
ANGULAR ± °	FRACTIONAL ± 1/64	DRAWN	RM 03/20/00	
FILE NO.	MATERIAL	SCALE NONE		
NEXT ASSY.	FINISH	ADJUSTMENT INSTRUCTIONS		SHEET 1 OF 1 SHEETS
QTY. USED	HEAT TREAT	2 VALVE CTRL. ANSI-GRADE 1		DWG. NO. REV.
1				10-981 A