

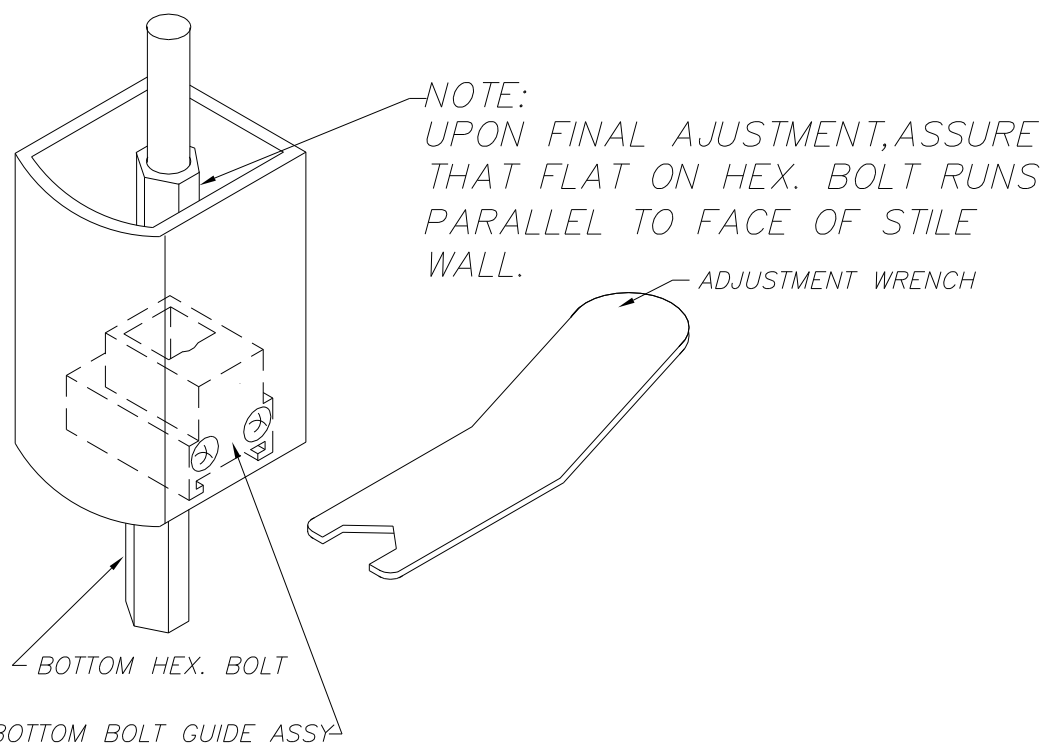
USAGE: 1085, 2085, 2086,  
 Δ 3185B & 3186, 1285, 1206

ADJUSTMENT INSTRUCTIONS.

- △ B PLACE ADJUSTMENT WRENCH ONTO BOLT. TURN WRENCH CLOCKWISE
- △ C TO RETRACT BOLT—COUNTERCLOCKWISE TO EXTEND BOLT.

NOTE:  
 TOP BOLT GUIDE ASSY USED WITH THE FOLLOWING:

1085, 1285, 1206, 2086 & 3186



D 11.05.05	UPDATE MODEL USAGE: ADD 1285	ECN1873	RM
C 11/3/97	REVISE ADJ. INSTRUCTIONS	ECN1116	RM
B 1/5/95	REVISE ADJ. INSTRUCTIONS	ECN982	RM
DIMENSIONAL TOLERANCES UNLESS OTHERWISE SPECIFIED DECIMAL DIMENSIONS .XX ± .010 DECIMAL DIMENSIONS .XXX ± .005 ANGULAR ± ° FRACTIONAL ± 1/64		APPROVALS APPROVED CHECKED DRAWN R.M. 11/4/95	DATE SCALE NONE
FILE NO.	MATERIAL	APPROVALS APPROVED CHECKED DRAWN R.M. 11/4/95	
NEXT ASSY.	FINISH	APPROVALS APPROVED CHECKED DRAWN R.M. 11/4/95	
QTY. USED	HEAT TREAT	ADJUSTMENT INSTRUCTIONS TOP & BTM BOLT GUIDE ASSY	SHEET 1 OF 1 SHEETS DWG. NO. 10-860 REV. D



3447 UNION PACIFIC AVE.  
 LOS ANGELES, CALIF. 90023