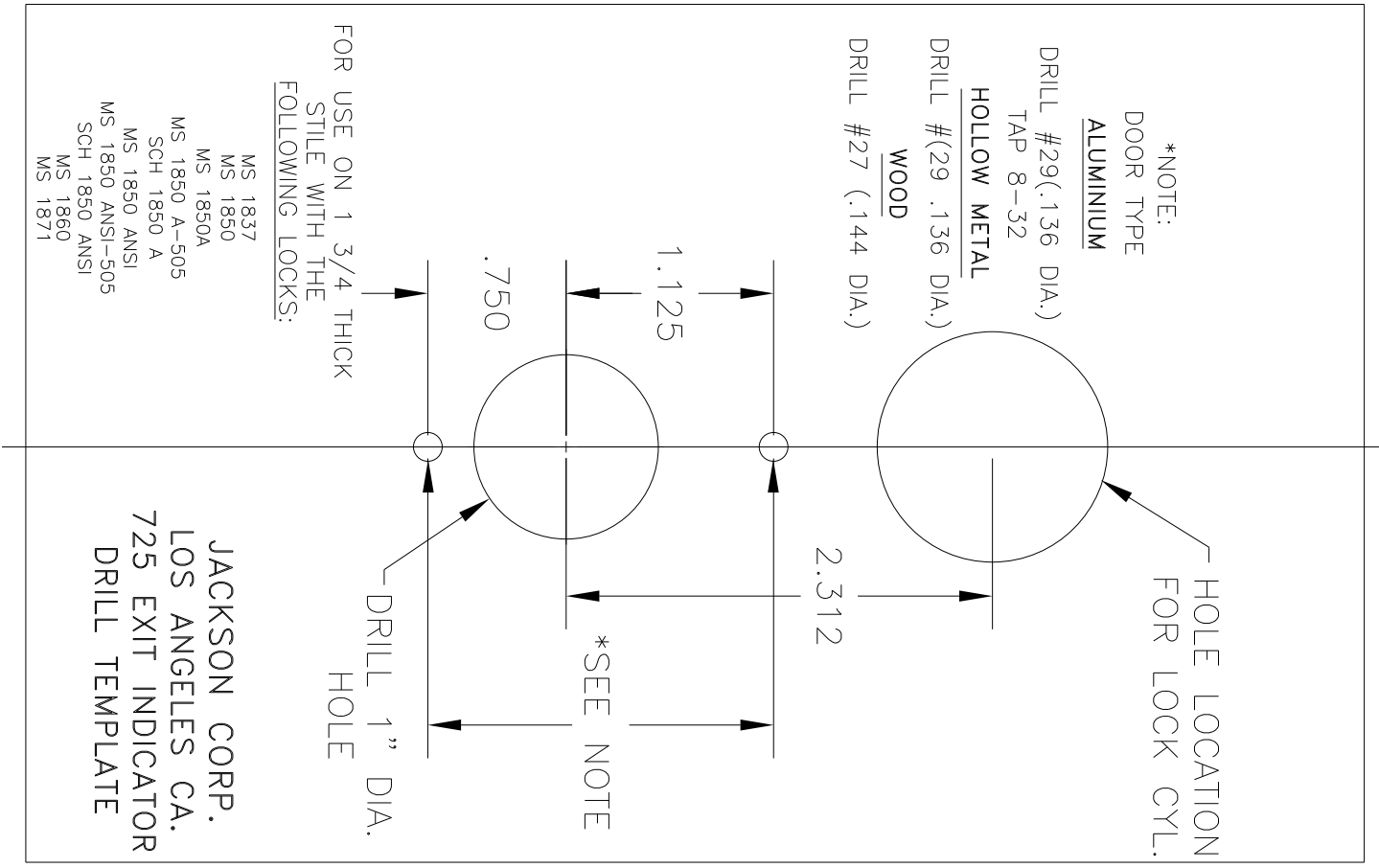



NOTES: 1. CUT TEMPLATE TO SIZE (7 1/4" x 4 21/32")  
 2. TEMPLATE TO BE REPRODUCED TO EXACT FULL SIZE.



- FOR USE ON 1 3/4 THICK  
 STILE WITH THE  
 FOLLOWING LOCKS:
- MS 1837
  - MS 1850
  - MS 1850A
  - MS 1850 A--505
  - SCH 1850 A
  - MS 1850 ANSI
  - MS 1850 ANSI-505
  - SCH 1850 ANSI
  - MS 1860
  - MS 1871

JACKSON CORP.  
 LOS ANGELES CA.  
 725 EXIT INDICATOR  
 DRILL TEMPLATE

DIMENSIONAL TOLERANCES UNLESS OTHERWISE SPECIFIED DECIMAL DIMENSIONS .XX ± .010 DECIMAL DIMENSIONS .XXX ± .005 ANGULAR ± ° FRACTIONAL ± 1/64		APPROVALS APPROVED CHECKED DRAWN R.M. 5/12/97	DATE    	 <p>3447 UNION PACIFIC AVE.          LOS ANGELES, CALIF. 90023</p>
FILE NO.	MATERIAL	SCALE FULL		
NEXT ASSY.	FINISH	DRILL TEMPLATE 725 EXIT INDICATOR		
QTY. USED 1	HEAT TREAT	SHEET 1 OF 1 SHEETS DWG. NO. 10-873		REV. A